

## Haulmark®

## ENHANCED VALUE

### RUGGED, AFFORDABLE AND STYLISH!

Your expectations are simple. Your trailer has to be built solid — durable and dependable for years to come. Your trailer has to be the appropriate size, proper capacity, equipped with the right features and competitively priced. You don't want the cheapest trailer, but you do want the best value for your dollar. At Haulmark®, we build trailers that work as hard as you do.



*Trailer shown may feature optional equipment available at an additional charge.*

## TRANSPORT®

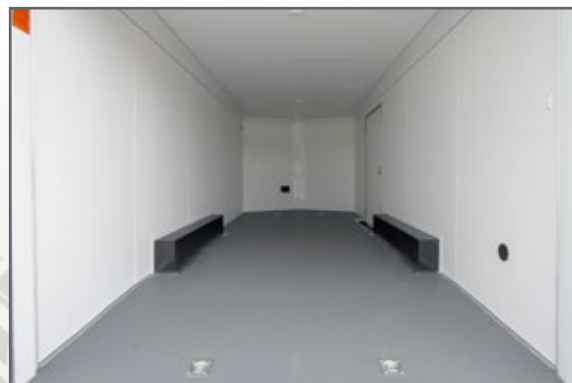
# SPECIFICATIONS



		TSV8516T2	TSV8520T2	TSV8524T2	TSV8528T3
<b>Body:</b>	<b>Length</b> <b>Width</b>	17' 10" 8' 4"	21' 10" 8' 4"	25' 10" 8' 4"	29' 10" 8' 4"
<b>Overall:</b>	<b>Length</b> <b>Width</b> <b>Height</b>	19' 6" 8' 6" 8' 7"	23' 6" 8' 6" 8' 7"	27' 6" 8' 6" 8' 7"	31' 6" 8' 6" 8' 8"
<b>Interior:</b>	<b>Length (Includes "V")</b> <b>Width</b> <b>Height</b>	17' 6" 8' 0" 6' 6"	21' 6" 8' 0" 6' 6"	25' 6" 8' 0" 6' 6"	29' 6" 8' 0" 6' 6"
<b>Platform Height</b>		19"	17"	17"	18"
<b>Spring Suspension E-Z® Lube Axles: Qty</b> <b>Total Axle Capacity</b>		Tandem 7,000 lbs.	Tandem 7,000 lbs.	Tandem 7,000 lbs.	Tandem 10,400 lbs.
<b>Brakes with Breakaway Kit</b>		Electric Drum	Electric Drum	Electric Drum	Electric Drum
<b>Radial Tire Size</b> <b>Tire Load Range</b>		ST205/75R15 C	ST205/75R15 C	ST205/75R15 C	ST225/75R15 D
<b>Hitch Ball Size</b>		2-5/16"	2-5/16"	2-5/16"	2-5/16"
<b>Hitch Height to Top of Ball</b>		20"	20"	20"	21"
<b>Hitch Weight (% of Curb Weight)</b>		10% to 15%	10% to 15%	10% to 15%	10% to 15%
<b>Curb Weight (Approximate)</b>		2,580 lbs.	3,220 lbs.	3,860 lbs.	4,680 lbs.
<b>GVWR</b>		7,000 lbs.	7,000 lbs.	7,000 lbs.	9,990 lbs.
<b>Payload Capacity (Approximate)</b>		4,420 lbs.	3,780 lbs.	3,140 lbs.	5,310
<b>Rear Ramp Door Opening - Width x Height</b>		94" x 72"	94" x 75"	94" x 75"	94" x 75"
<b>12v Male Connection</b>		7-way	7-way	7-way	7-way
<b>Beavertail</b>		Optional 24"	48"	48"	48"

# STANDARD FEATURES

- V-Nose/Flat Roof Profile
- Silver Mod Wheels with 15" Radial Tires
- Smooth Aluminum Fenderettes
- .030 Aluminum Bonded Exterior (No Screws)
- 1-Piece Aluminum Roof
- 12v LED Slim Line Tail Lights
- 12v LED Clearance Lights
- 24" ATP Stoneguard
- Flow-Thru Sidewall Vents
- Rear Ramp Door with Spring Assist
- 16" Ramp Extension
- 36" Side Entry Door with Flush Lock
- Recessed Step at Side Door
- 12v High Output LED Dome Light (2)
- 3/4" PlexCore™ Decking
- 3/8" PlexCore™ Sidewall Liner
- 5,000 lb. Square D-Rings with Welded Backer Plate (4)
- Spring Axles with E-Z Lube® Hubs
- Electric Brakes with Breakaway Kit
- Tube Main Rails
- Entire Chassis Undercoated
- ArmorTech™ on A-Frame and Rear End Rail
- 16" OC Tube Vertical Posts
- 16" OC Crossmembers
- 16" OC Tube Roof Bows
- 3-Year Limited Warranty



Trailers shown may feature optional equipment available at an additional charge.



GET MORE | GO FURTHER

Specifications, features, options, packages & pricing subject to change **without** notice. See your authorized Haulmark® dealer for more information.